



Helping Law Enforcement Build Stronger Cases

See why PenLink is the industry's preferred partner
for digital investigation intelligence.

TO REQUEST A FREE DEMO,
VISIT [PENLINK.COM](https://penlink.com).





Collect. Normalize. Analyze.

FIND THE ANSWERS YOU'RE LOOKING FOR

PenLink offers a comprehensive suite of digital investigation solutions to meet the growing demands of today's investigators. Whether you're loading historical data or conducting live collection, PenLink can ingest and normalize native file formats and live delivery standards from virtually any digital data provider.

TELEPHONIC COMMUNICATIONS

- Call Detail Records (CDRs)
- Mobile forensics
- Live collection from intercept delivery standards
- Cell tower dumps, range to tower (RTT), location pings

INTERNET-BASED COMMUNICATIONS

- Email
- Social media and instant messaging
- Mobile apps
- Account activity

ENHANCE YOUR INVESTIGATIONS WITH SOCIAL MEDIA DATA

PenLink sets the standard for the collection and analysis of internet-based communications. Expand your investigation beyond phones by collecting and analyzing data from nearly any social media or internet-based provider.

For little or no cost, investigators can request access to a target's online activity, revealing invaluable insights and evidence. Our team of experts can assist you in writing the legal order and guide you through the process of receiving, autoloading, and analyzing data.



GET THE ENTIRE PICTURE

Phones aren't used only for making calls. Social media, email, and mobile forensic datasets are full of valuable information, and most media companies will provide a wealth of information:

- Logins
- Locations
- Search history
- Media content
- Subscriber data

GO BEYOND WITH NON-TRADITIONAL DATA

But don't stop there—think outside the box and collect data from all possible avenues. Load it all into PenLink and discover so much more about your target, including:

- Vehicle-tracking data
- Audio surveillance
- License-plate reader data
- Financial data
- And, so much more!



COLLECT, QUERY, AND IDENTIFY

PenLink offers a powerful, easy-to-use, and flexible array of reporting and analytical tools to reveal connections, trends, and relationships that might otherwise go undetected.



COLLECT AND NORMALIZE case data in a powerful relational database



QUERY across cases and analyze data from a single unified view



IDENTIFY commonalities, frequencies, and patterns of behavior

Advanced Mapping and Visualization

BRING CLARITY TO YOUR INVESTIGATIONS WITH 3D VISUALIZATIONS

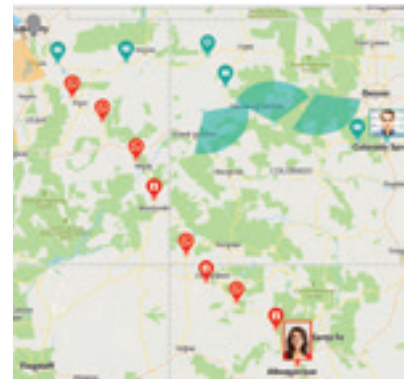
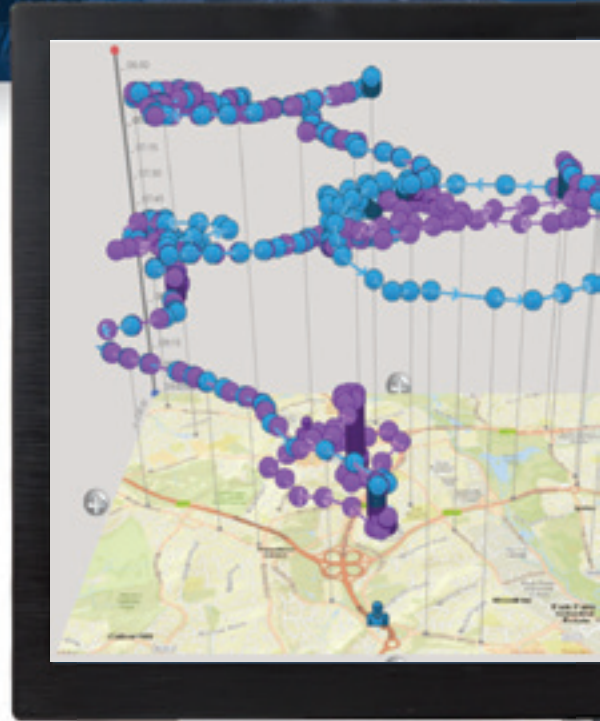
PenLink offers the ability to load data from virtually any communications, surveillance, or forensic data provider. Enabled with a single-step loading process, PenLink can ingest and normalize data without manual manipulation. Investigators can analyze data immediately, saving time and allowing cases to advance faster.

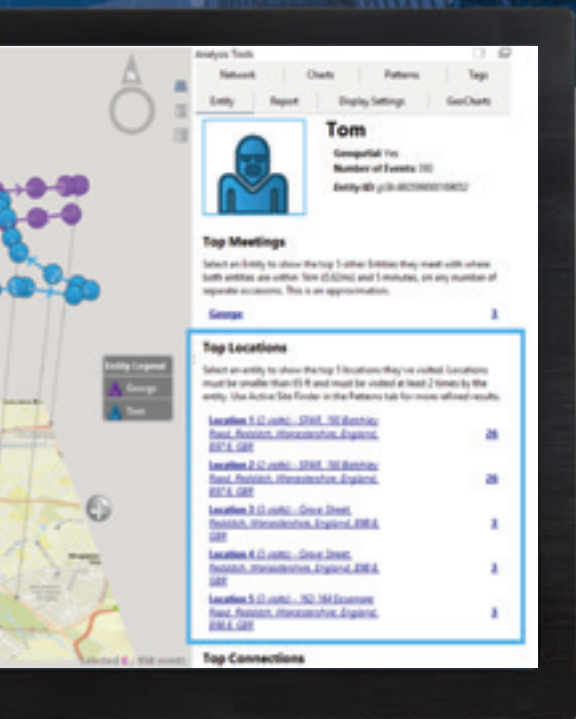
ADVANCED LOCATION SERVICES

PenLink does support other map systems—including Open Street Maps, Google Maps, and Bing Maps—and can also map to external mapping systems such as Google Earth. You can also boost your mapping capabilities by leveraging 3D mapping and geo-temporal visualization functions.

Whether you're using internal or external mapping solutions, PenLink gives you the ability to plot all your data types on one customizable map, including:

- Cell sector usage
- Cell tower frequencies
- Range to tower (RTT)
- Location pings
- Subscriber addresses
- IP addresses
- Snapchat geolocations
- Images with EXIF data
- Facebook-centric locations
- Google geofences

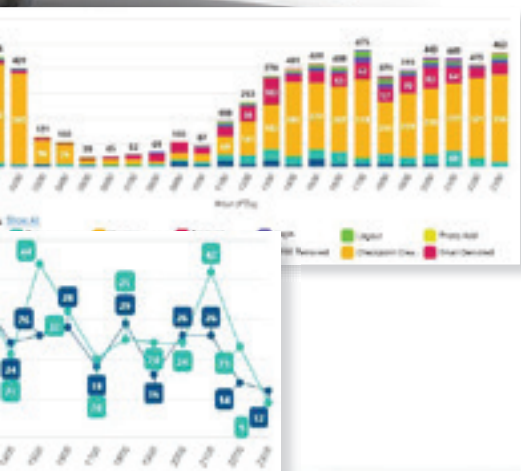




ANALYTICAL FEATURES AND FUNCTIONS

The sheer amount of data involved in any investigation can be a challenge. PenLink gives you the capability to quickly gain insights and reveal connections, trends, and relationships that may otherwise have gone unnoticed, via:

- Interactive grids
- Reports
- Graphical analysis
- Combined view
- Conversational view
- Media gallery
- Keyword search
- Search lists



3D MAPPING AND VISUALIZATION

PenLink offers the most sophisticated mapping and visualization tools to help accelerate your investigations and improve your agency's clearance rate:

- 3D mapping shows time and space to uncover hidden details
- Easily identify top callers and locations, time of day, and patterns or relationships
- Instantly find activities (ie. meetings or co-travel) to help place your target's device at the scene of a crime.

Court-ready Visualization

PREPARE WITH CONFIDENCE FOR THE COURTROOM

Accurately representing your data is essential in court, and PenLink's visualization and presentation capabilities can help you drive your point home for jurors and judges alike.

Sophisticated analysts and investigators can select from a variety of visual outputs—including PowerPoint, animated videos, and images—to produce a high-impact courtroom presentation. PenLink gives you the power to present target movements over time by sharing animated videos. Mark up maps with notes and annotations to help tell your story.



Mobile Companion

TAKE YOUR INVESTIGATIONS TO GO

PenPoint allows investigators to access data and conduct secure location-based electronic surveillance right from their phones.

HIT THE GAS PEDAL

Accelerate your investigations on the road with PenPoint's numerous filtering and display options, intuitive navigation between mapped data points, and push notifications for when new data arrives.

- Map all call and ping locations, both live and historical
- Customize map features to quickly track targets
- Utilize heat maps and location histories to derive patterns of life and predict future movements
- Receive real-time notifications for new calls and pings



Convenient real-time access



Target location mapping



Intuitive and easy-to-use

Industry-preferred Service

GET HELP WHEN YOU NEED IT, WHEREVER YOU ARE.

We understand the need for reliable tools that provide answers quickly and concisely. Our team of experts is dedicated to ensuring that you receive the training and support you need.

CUSTOMER SUPPORT

Our industry-leading support team is available to help you find the answers you need, ensuring your issue is resolved promptly and providing you with the necessary training to improve future experiences.

TRAINING ACADEMY

The PenLink Training Academy provides unlimited access to our entire suite of training offerings. With real-world scenarios and immersive training options, you can learn as you go, update your education, and add needed skills to help you progress in the field.



CONSULTATION SERVICES

Optimize your PenLink experience with a consultation, either in person or online, from one of our system experts. You will receive training and troubleshooting techniques customized to your agency's needs.

INSTALLATION SERVICES

To ensure the operational integrity of your system, our expert system engineers configure the hardware components and conduct software installation, making the onboarding process efficient and easy.

About PenLink

Founded in 1986, PenLink (www.penlink.com) is a leading developer and provider of mission-critical communications and digital evidence collection and analysis software to law enforcement agencies in the U.S. and internationally. In addition to its flagship digital investigation platform, PenLink offers enhanced capabilities, including an inter-agency data-exchange network, 3-D visualization technology, and artificial intelligence-driven advanced analytics. The company has a 35-year history of serving law enforcement agencies in their mission to fight wrongdoing.

PENLINK
PENLINK.COM